

# transportify

## BUSINESS PROGRAM




**PHILIPPINES 2020**

# WE ARE

Transportify is a full service logistics solution powered by sophisticated technology that allows your business to book and manage FTL transport of goods and cargo.

Our wide selection of heavy trucks down to compact vehicles will pickup anywhere in Mega Manila, Pampanga & Baguio and deliver anywhere in Luzon.

FLEET  
 **20k**

FTL LOADS  
 **1.9M**

CLIENTS  
 **28k**

INSTALLS  
 **500k**

OFFICES  
 **2**

TEAM  
 **100**

# BENEFITS

An invitation-only program for businesses featuring tailored services, most of them free, to meet the demanding needs of enterprise and SME customers.

## FREE

Monthly Invoicing	15 day payment terms
Commercial Insurance	Php 3 million per booking from AXA Philippines
VIP Hotline	Call, chat, or email 24/7
Process Mapping	Driver instruction customized for your requirements
Your Logo	Prominently displayed in app signature section
Enterprise Dashboard	Specialty dashboard for batch management
Custom Analytics	Custom KPI dashboard just for you

## PAID

### COD Return\*

1.5% of cash collected (Insured, next day return)

\*COD & Document Return available only in Mega Manila & Pampanga

### Document Return\*

Php 80.00 min per booking (Insured, scheduled return)

# GET STARTED



**FREE TO JOIN AND LEAVE ANYTIME**



**NO PROGRAM OR MEMBER FEES**



**MOST PROGRAM BENEFITS ARE FREE**



**MONTHLY ACTIVITY REQUIREMENT**



**APPLY FOR YOUR BUSINESS HERE**

To remain in the program and continuing reaping its many free benefits, you must maintain minimum activity for three months of 10 booking or Php 5,000 worth of transaction reflected on the billing.



# OUR FLEET



10 WHEELER WING VAN • 15,000 KG • 55 M<sup>3</sup>



CLOSED VAN • 2,000 KG • 14 M<sup>3</sup>



CLOSED VAN • 2,000 KG • 8 M<sup>3</sup>



VAN • 1,000 KG • 3 M<sup>3</sup>



L300 • 1,000 KG • 3 M<sup>3</sup>



ENONOMY • 300 KG • 1.25 M<sup>3</sup>



ECONOMY • 200 KG • 0.5 M<sup>3</sup>



MORE FLEET DETAILS





# OUR PRICES

Choose from different booking types, each with its own price method. For quick & schedule, each vehicle has a start price and price per km thereafter. For full day, each vehicle has a fixed price for set hours varying by city. For long haul, each vehicle and key route has a fixed price.



## QUICK & SCHEDULE

Starting price plus price per km



## FULL DAY

Fixed price for 10 hours



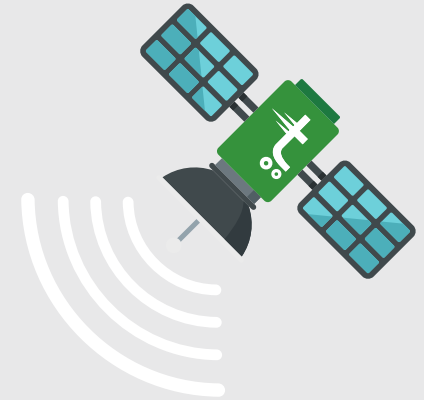
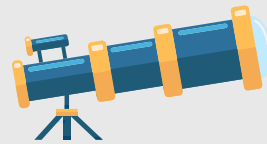
## LONG HAUL

Fixed prices based on route



**INSTANT QUOTE  
FROM OUR WIZARD**

# OUR SERVICE AREA







**WE ARE OVER 100 COMMITTED STAFF  
AT OUR HQ IN MANILA**

# OUR LEADERS



**CO-COUNTRY DIRECTOR**  
**Paulo Bengson**

Paulo manages Transportify's Operations Team in the Philippines with responsibility for our rapidly growing fleet and extensive ground operations through Mega Manila and surrounding areas.



**CO-COUNTRY DIRECTOR**  
**Noel Abelardo**

Noel manages Transportify's growing Demand Team in the Philippines with responsibility for our value proposition to local and international businesses and our overall business development efforts.



**HEAD OF SERVICE**  
**Kelvin Caro**

Kelvin manages Transportify's busy Customer Service Center in the Philippines with a large agent team and thousands of daily contacts with customers.

**We are an Philippine company fully licensed by Deliverer Group and supported by a strong team and managers with regional logistics experience.**



**IN PHILIPPINES  
SINCE JULY 2016**



# VISIT US ANYTIME



Live Chat



(02) 5317 3800



Fast Email



## Manila Office

Tycoon Center 23F  
Pearl Drive, Ortigas Center  
Pasig City, Philippines 1605



## Pampanga Office

2nd Floor, Unit 2-04,  
CBL Building, MacArthur  
Highway, Cer-Hil  
Subdivision, San Fernando  
2000 Pampanga

# OR BOOK NOW

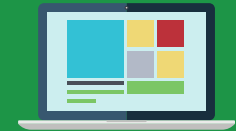
Click  
any icon



Install App



Install App



Web App

