

transportify

BUSINESS PROGRAM




WE ARE 

Transportify is a full service logistics solution powered by sophisticated technology that allows your business to book and manage FTL transport of goods and cargo.

Our wide selection of heavy trucks down to compact vehicles will pickup anywhere in Mega Manila, Pampanga & Baguio and deliver anywhere in Luzon.

FLEET
 **20k**

FTL LOADS
 **1.9M**

CLIENTS
 **28k**

INSTALLS
 **500k**

OFFICES
 **2**

TEAM
 **100**

BENEFITS

An invitation-only program for businesses featuring tailored services, most of them free, to meet the demanding needs of enterprise and SME customers.

FREE

Monthly Invoicing	15 day payment terms
Commercial Insurance	Php 3 million per booking from AXA Philippines
VIP Hotline	Call, chat, or email 24/7
Process Mapping	Driver instruction customized for your requirements
Your Logo	Prominently displayed in app signature section
Enterprise Dashboard	Specialty dashboard for batch management
Custom Analytics	Custom KPI dashboard just for you

PAID

COD Return* 2.5% of cash collected (Insured, next day return)	Document Return* Php 80.00 min per booking (Insured, scheduled return)
---	--

*COD & Document Return available only in Mega Manila & Pampanga

GET STARTED



FREE TO JOIN AND LEAVE ANYTIME



NO PROGRAM OR MEMBER FEES



MOST PROGRAM BENEFITS ARE FREE



MONTHLY ACTIVITY REQUIREMENT



APPLY FOR YOUR BUSINESS HERE

To remain in the program and continuing reaping its many free benefits, you must maintain minimum activity for three months of 10 booking or Php 5,000 worth of transaction reflected on the billing.



OUR FLEET



10W WING VAN • 15,000 KG • 55 M³



REEFER TRUCK • 2,000 KG • 14 M³



CLOSED VAN • 2,000 KG • 14 M³



CLOSED VAN • 2,000 KG • 8 M³



PICKUP TRUCK • 2,000 KG



L300/VAN • 1,000 KG • 3 M³



ENONOMY • 300 KG • 1.25 M³



ECONOMY • 200 KG • 0.5 M³



MORE FLEET DETAILS



OUR PRICES

Choose from different booking types, each with its own price method. For quick & schedule, each vehicle has a start price and price per km thereafter. For full day, each vehicle has a fixed price for set hours varying by city.



QUICK & SCHEDULE

Starting price plus price per km



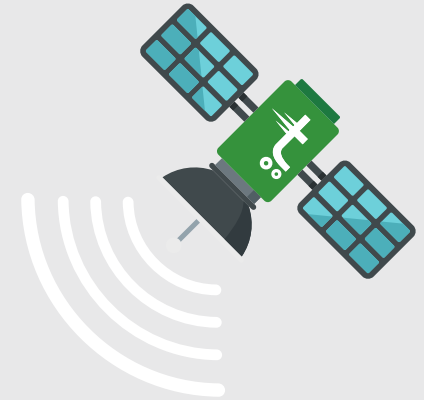
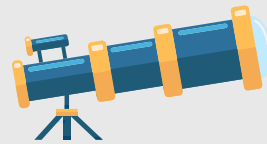
FULL DAY

Fixed price for 10 hours



**INSTANT QUOTE
FROM OUR WIZARD**

OUR SERVICE AREA





**WE ARE OVER 100 COMMITTED STAFF
AT OUR HQ IN MANILA**

OUR LEADERS



COUNTRY DIRECTOR
Paulo Bengson

Paulo manages Transportify's Operations Team in the Philippines with responsibility for our rapidly growing fleet and extensive ground operations through Mega Manila and surrounding areas.



DEPUTY COUNTRY DIRECTOR
Noel Abelardo

Noel manages Transportify's growing Demand Team in the Philippines with responsibility for our value proposition to local and international businesses and our overall business development efforts.



HEAD OF SERVICE
Kelvin Caro

Kelvin manages Transportify's busy Customer Service Center in the Philippines with a large agent team and thousands of daily contacts with customers.

We are an Philippine company fully licensed by Deliveroo Group and supported by a strong team and managers with regional logistics experience.



**IN PHILIPPINES
SINCE JULY 2016**

VISIT US ANYTIME



Live Chat



(02) 5317 3800



Fast Email



Manila Office

Tycoon Center 23F
Pearl Drive, Ortigas Center
Pasig City, Philippines 1605



Pampanga Office

2nd Floor, Unit 2-04,
CBL Building, MacArthur
Highway, Cer-Hil
Subdivision, San Fernando
2000 Pampanga

OR BOOK NOW

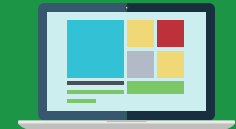
Click
any icon



Install App



Install App



Web App

